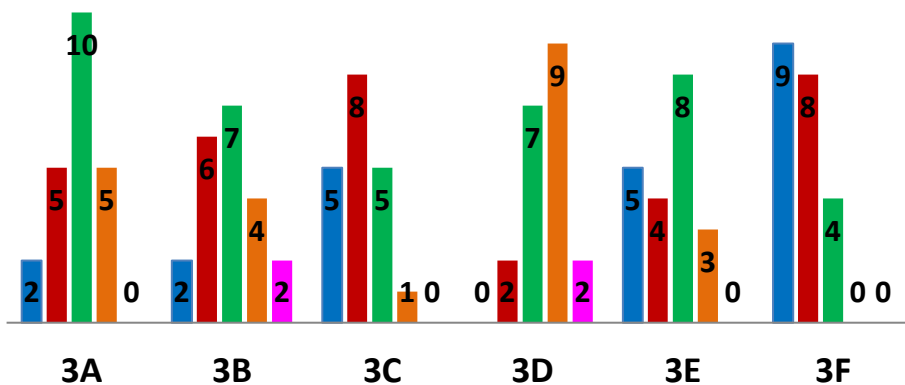


# RISULTATI INVALSI

## 3^ MEDIA – A.S. 2017/18

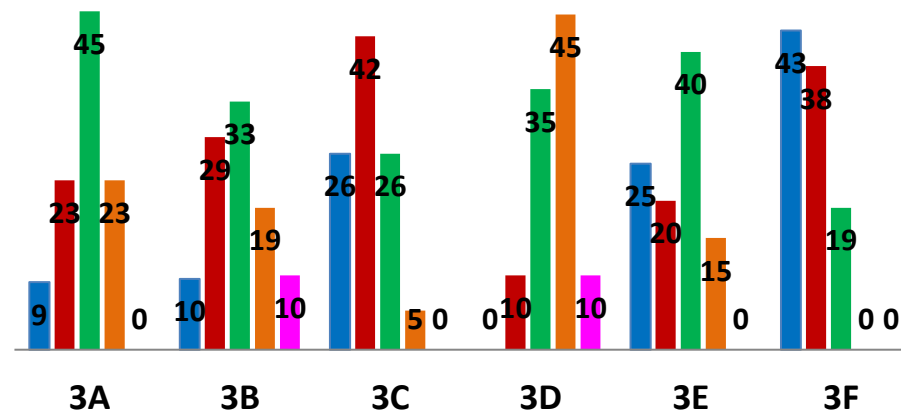
LIVELLI ITALIANO  
N. Alunni

■ 1 ■ 2 ■ 3 ■ 4 ■ 5



LIVELLI ITALIANO  
%alunni

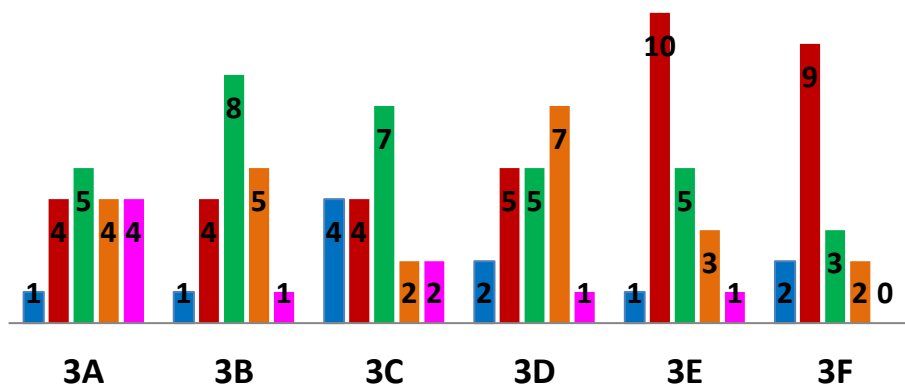
■ 1 ■ 2 ■ 3 ■ 4 ■ 5



## 3^ MEDIA – A.S. 2018/19

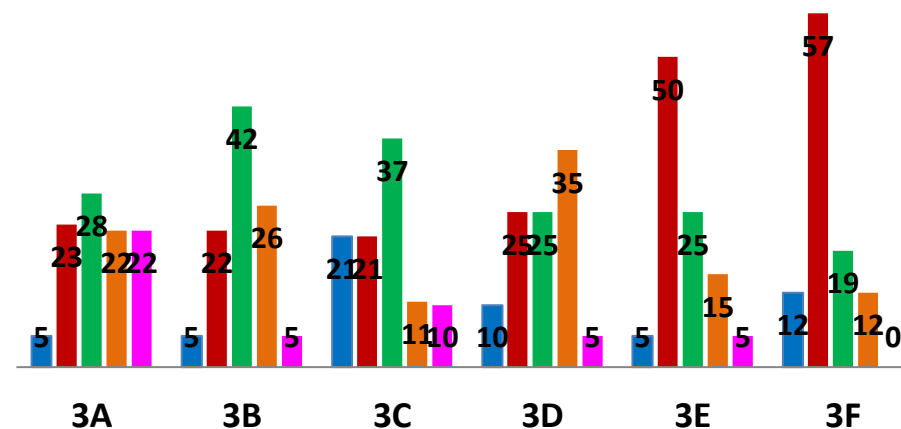
LIVELLI ITALIANO  
N. Alunni

■ 1 ■ 2 ■ 3 ■ 4 ■ 5

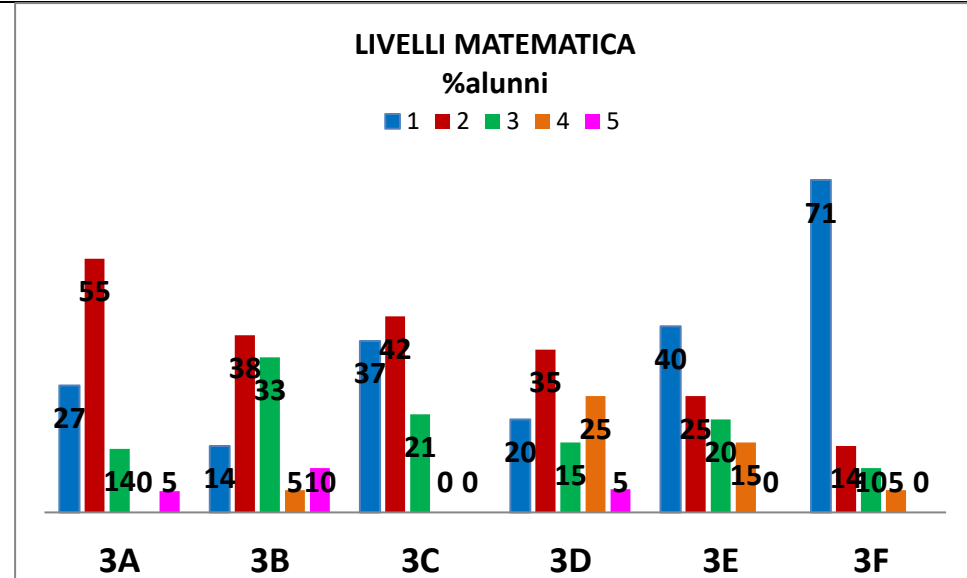
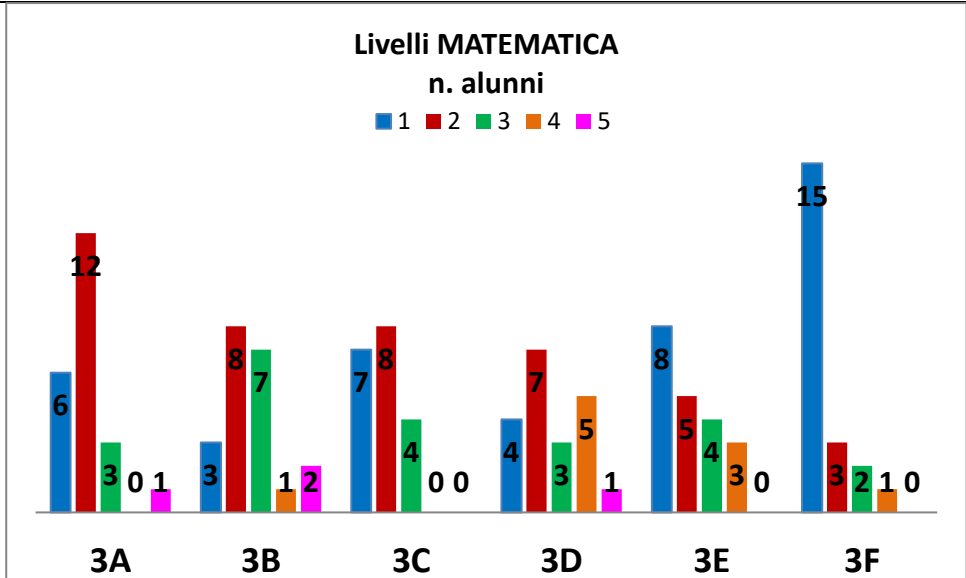


LIVELLI ITALIANO  
%alunni

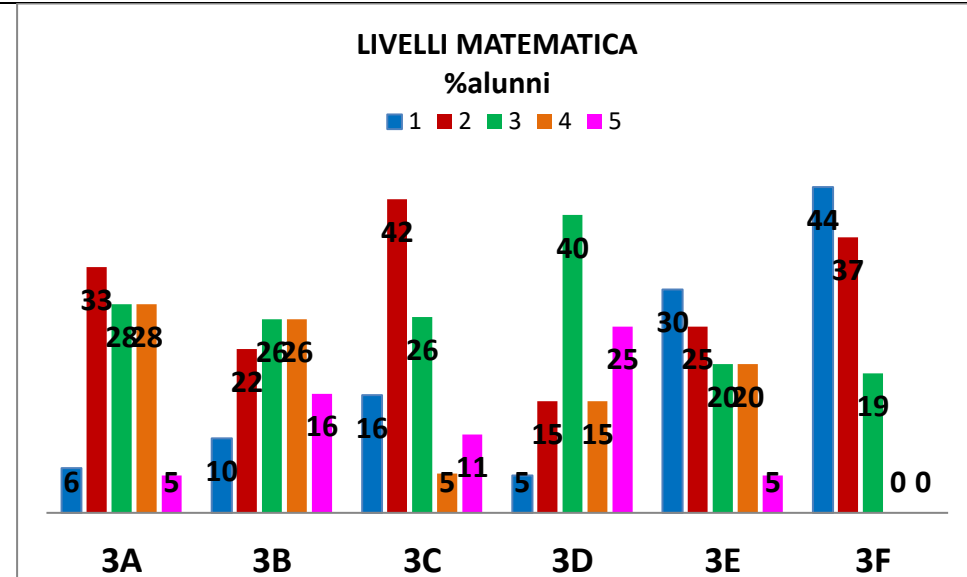
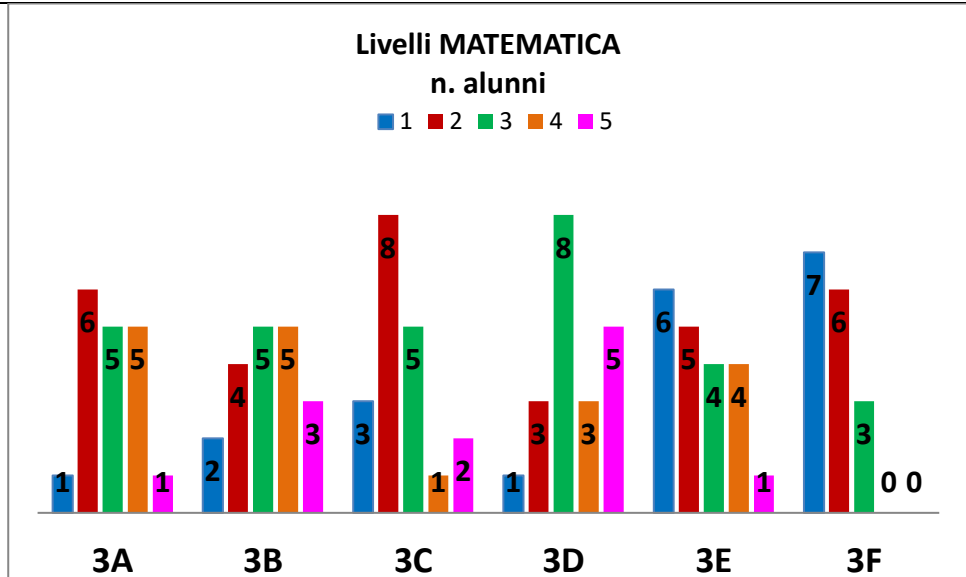
■ 1 ■ 2 ■ 3 ■ 4 ■ 5



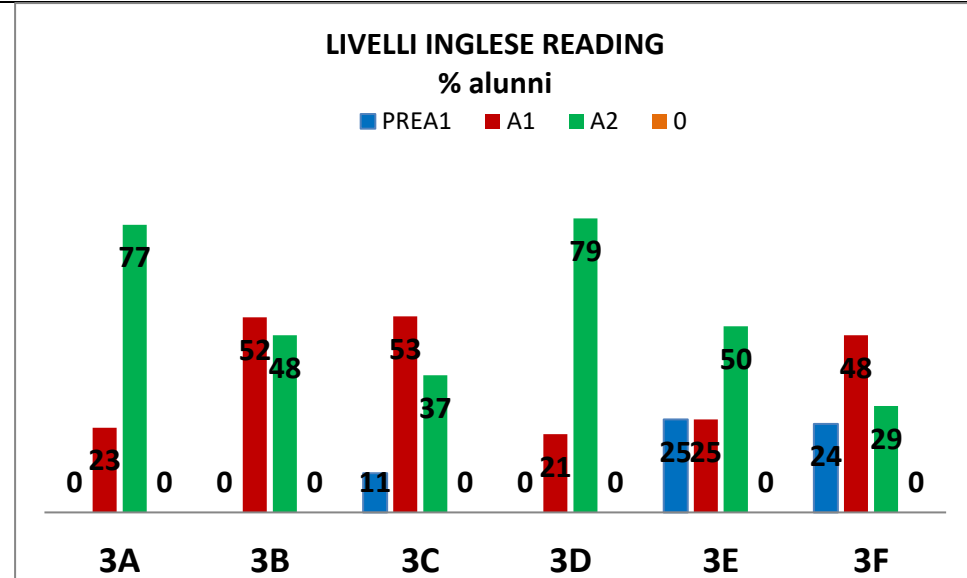
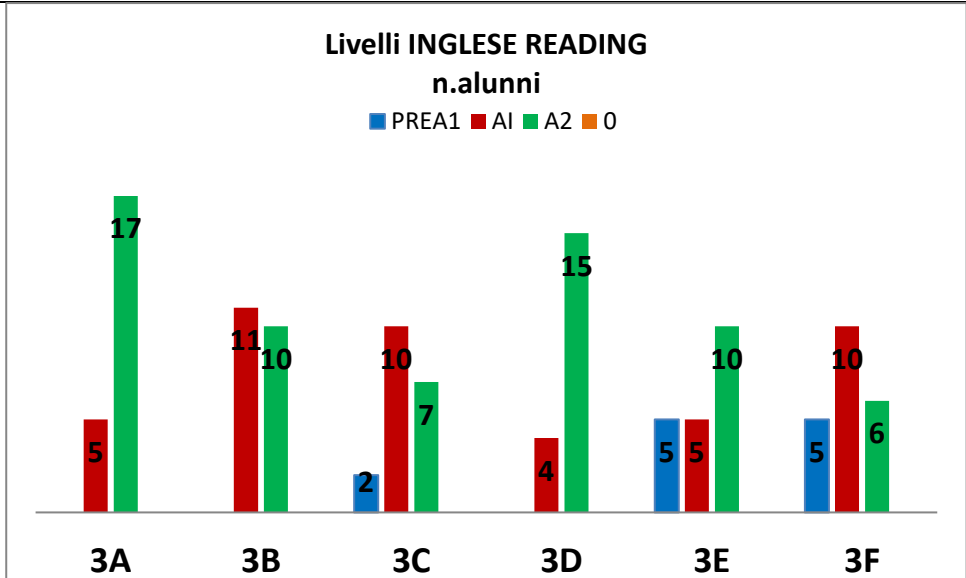
### 3^A MEDIA – A.S. 2017/18



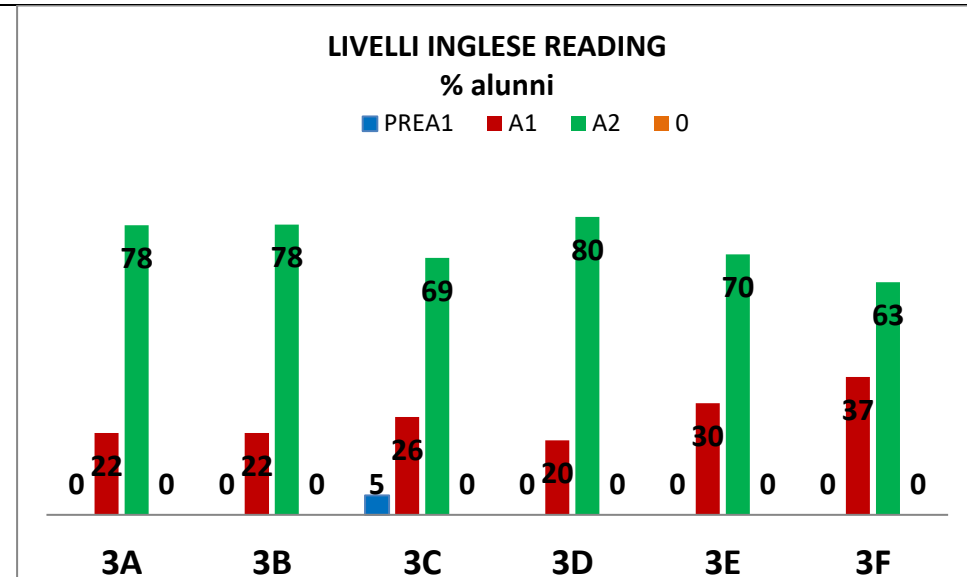
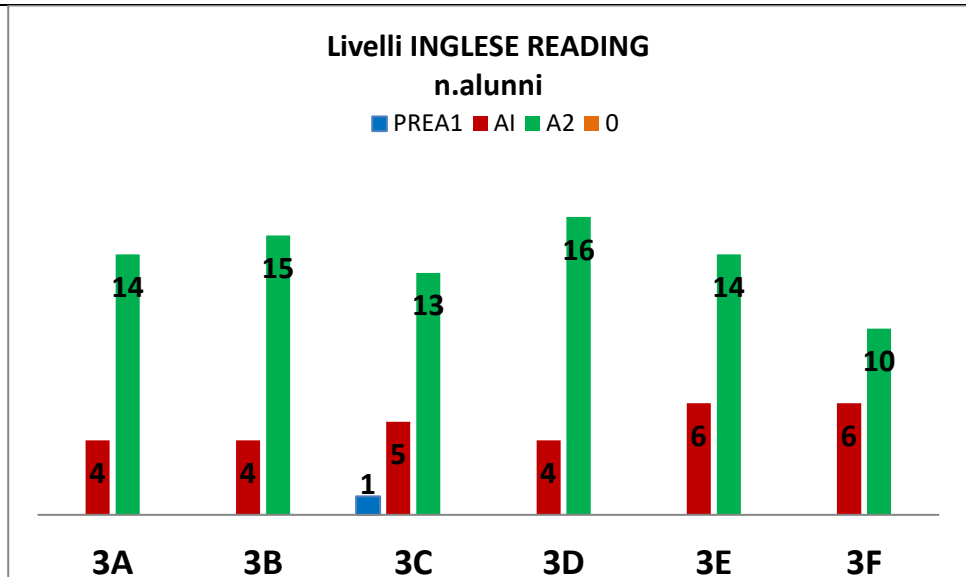
### 3^A MEDIA – A.S. 2018/19



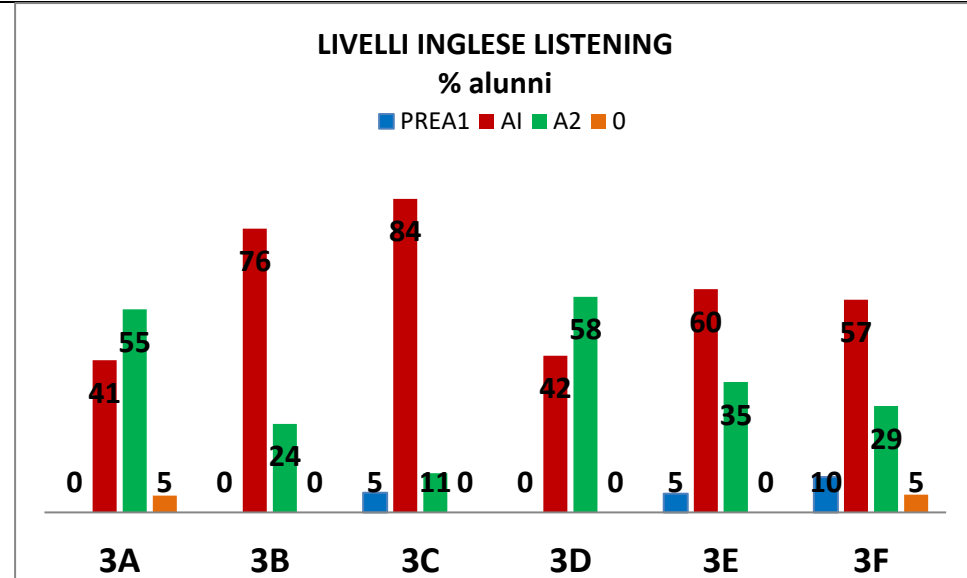
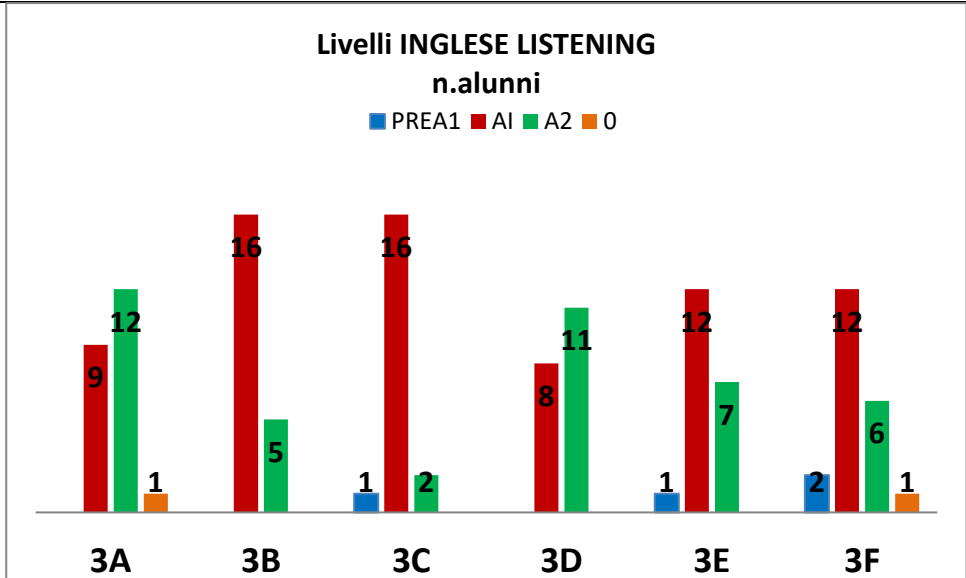
### 3<sup>A</sup> MEDIA – A.S. 2017/18



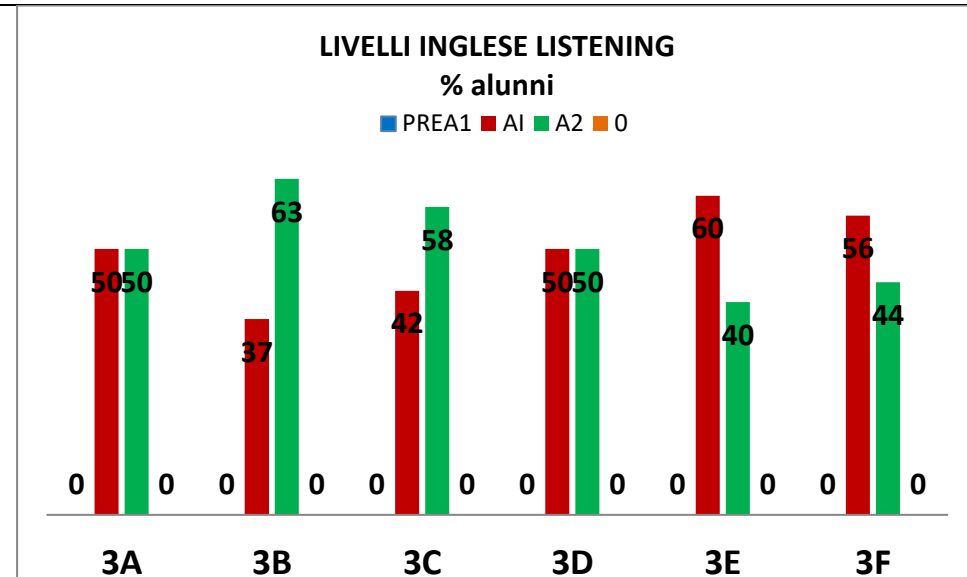
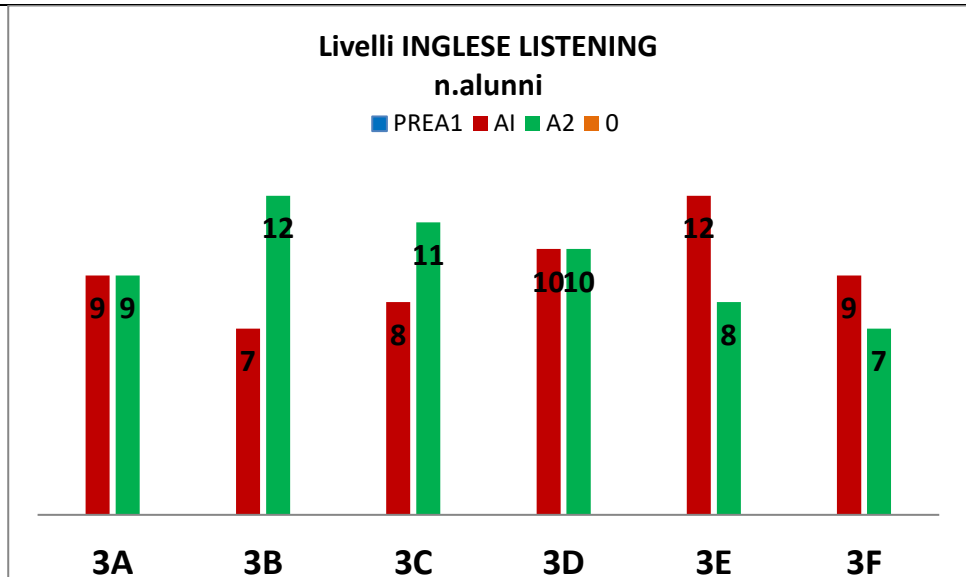
### 3<sup>A</sup> MEDIA – A.S. 2018/19



### 3<sup>A</sup> MEDIA – A.S. 2017/18



### 3<sup>A</sup> MEDIA – A.S. 2018/19



**DISTRIBUZIONE DEGLI STUDENTI NEI LIVELLI DI APPRENDIMENTO**

Tavola 1A Italiano 2017/18

Classi/Istituto/Dettaglio territoriale	Percentuale studenti livello 1	Percentuale studenti livello 2	Percentuale studenti livello 3	Percentuale studenti livello 4	Percentuale studenti livello 5
420040120801	9,1	22,7	45,5	22,7	0,0
420040120802	13,6	27,3	31,8	18,2	9,1
420040120803	26,3	42,1	26,3	5,3	0,0
420040120804	0,0	10,0	35,0	45,0	10,0
420040120805	25,0	20,0	40,0	15,0	0,0
420040120806	42,9	38,1	19,1	0,0	0,0
SSIC85100T	<b>19,4</b>	26,6	33,1	17,7	<b>3,2</b>
Sardegna	13,0	24,7	28,7	23,5	10,2
Sud e isole	19,9	26,2	28,3	18,4	7,3
Italia	13,3	21,1	29,6	23,6	12,3

Tavola 1A Italiano 2018/19

Classi/Istituto/Dettaglio territoriale	Studenti livello 1	Studenti livello 2	Studenti livello 3	Studenti livello 4	Studenti livello 5
420040120801	1 (5,6%)	4 (22,2%)	5 (27,8%)	4 (22,2%)	4 (22,2%)
420040120802	1 (5,3%)	4 (21,1%)	8 (42,1%)	5 (26,3%)	1 (5,3%)
420040120803	4 (21,1%)	4 (21,1%)	7 (36,8%)	2 (10,5%)	2 (10,5%)
420040120804	2 (10,0%)	5 (25,0%)	5 (25,0%)	7 (35,0%)	1 (5,0%)
420040120805	1 (5,0%)	10 (50,0%)	5 (25,0%)	3 (15,0%)	1 (5,0%)
420040120806	2 (12,5%)	9 (56,3%)	3 (18,8%)	2 (12,5%)	0 (0,0%)
SSIC85100T	<b>11 (9,8%)</b>	36 (32,1%)	33 (29,5%)	23 (20,5%)	<b>9 (8,0%)</b>
Sardegna	15,8%	25,7%	29,9%	20,8%	7,9%
Sud e isole	20,9%	25,0%	29,6%	18,3%	6,2%
Italia	12,8%	21,6%	31,2%	23,6%	10,8%

Tavola 1B Matematica 2017/18

Classi/Istituto/Dettaglio territoriale	Percentuale studenti livello 1	Percentuale studenti livello 2	Percentuale studenti livello 3	Percentuale studenti livello 4	Percentuale studenti livello 5
420040120801	27,3	54,6	13,6	0,0	4,6
420040120802	13,6	40,9	31,8	4,6	9,1
420040120803	36,8	42,1	21,1	0,0	0,0
420040120804	20,0	35,0	15,0	25,0	5,0
420040120805	40,0	25,0	20,0	15,0	0,0
420040120806	71,4	14,3	9,5	4,8	0,0
SSIC85100T	34,7	35,5	18,6	8,1	3,2
Sardegna	20,5	27,3	26,2	15,2	10,9
Sud e isole	27,3	28,3	23,0	13,1	8,2
Italia	17,3	22,8	24,7	18,5	16,7

Tavola 1B Matematica 2018/19

Classi/Istituto/Dettaglio territoriale	Studenti livello 1	Studenti livello 2	Studenti livello 3	Studenti livello 4	Studenti livello 5
420040120801	1 (5,6%)	6 (33,3%)	5 (27,8%)	5 (27,8%)	1 (5,6%)
420040120802	2 (10,5%)	4 (21,1%)	5 (26,3%)	5 (26,3%)	3 (15,8%)
420040120803	3 (15,8%)	8 (42,1%)	5 (26,3%)	1 (5,3%)	2 (10,5%)
420040120804	1 (5,0%)	3 (15,0%)	8 (40,0%)	3 (15,0%)	5 (25,0%)
420040120805	6 (30,0%)	5 (25,0%)	4 (20,0%)	4 (20,0%)	1 (5,0%)
420040120806	7 (43,8%)	6 (37,5%)	3 (18,8%)	0 (0,0%)	0 (0,0%)
SSIC85100T	20 (17,9%)	32 (28,6%)	30 (26,8%)	18 (16,1%)	12 (10,7%)
Sardegna	22,6%	30,1%	24,6%	12,8%	9,9%
Sud e isole	27,3%	28,4%	22,5%	13,1%	8,7%
Italia	16,0%	22,7%	25,7%	18,7%	16,9%

Tavola 1C Inglese Reading 2017/18

Classi/Istituto/Dettaglio territoriale	Percentuale studenti livello Pre-A1	Percentuale studenti livello A1	Percentuale studenti livello A2
420040120801	0,0	22,7	77,3
420040120802	0,0	54,6	45,5
420040120803	10,5	52,6	36,8
420040120804	0,0	21,1	79,0
420040120805	25,0	25,0	50,0
420040120806	23,8	47,6	28,6
SSIC85100T	9,8	37,4	52,9
Sardegna	6,6	26,8	66,7
Sud e isole	11,1	30,2	58,8
Italia	5,5	20,6	73,9

Tavola 1C Inglese Reading 2018/19

Classi/Istituto/Dettaglio territoriale	Studenti livello Pre-A1	Studenti livello A1	Studenti livello A2
420040120801	0 (0,0%)	4 (22,2%)	14 (77,8%)
420040120802	0 (0,0%)	4 (21,1%)	15 (79,0%)
420040120803	1 (5,3%)	5 (26,3%)	13 (68,4%)
420040120804	0 (0,0%)	4 (20,0%)	16 (80,0%)
420040120805	0 (0,0%)	6 (30,0%)	14 (70,0%)
420040120806	0 (0,0%)	6 (37,5%)	10 (62,5%)
SSIC85100T	1 (0,9%)	29 (25,9%)	82 (73,2%)
Sardegna	6,1%	29,8%	64,1%
Sud e isole	9,3%	29,2%	61,5%
Italia	3,8%	18,6%	77,6%

Tavola 1D Inglese Listening 2017/18

Classi/Istituto/Dettaglio territoriale	Percentuale studenti livello Pre-A1	Percentuale studenti livello A1	Percentuale studenti livello A2
420040120801	0,0	42,9	57,1
420040120802	0,0	77,3	22,7
420040120803	5,3	84,2	10,5
420040120804	0,0	42,1	57,9
420040120805	5,0	60,0	35,0
420040120806	10,0	60,0	30,0
SSIC85100T	3,3	61,2	35,5
Sardegna	4,5	50,9	44,6
Sud e isole	10,2	57,2	32,6
Italia	4,3	39,4	56,3

Tavola 1D Inglese Listening 2018/19

Classi/Istituto/Dettaglio territoriale	Studenti livello Pre-A1	Studenti livello A1	Studenti livello A2
420040120801	0 (0,0%)	9 (50,0%)	9 (50,0%)
420040120802	0 (0,0%)	7 (36,8%)	12 (63,2%)
420040120803	0 (0,0%)	8 (42,1%)	11 (57,9%)
420040120804	0 (0,0%)	10 (50,0%)	10 (50,0%)
420040120805	0 (0,0%)	12 (60,0%)	8 (40,0%)
420040120806	0 (0,0%)	9 (56,3%)	7 (43,8%)
SSIC85100T	0 (0,0%)	55 (49,1%)	57 (50,9%)
Sardegna	2,4%	54,8%	42,8%
Sud e isole	6,0%	55,4%	38,6%
Italia	2,5%	37,6%	59,9%



